



Sherborne St John
Parish Council
Request for Proposal

Chute Playing Fields



Introduction

Sherborne St John is recorded in the Domesday Book and continues to be a vibrant Parish over 900 years later. Located just to the north of Basingstoke in North Hampshire, it comprises 1200 inhabitants residing predominantly in the village of the same name. The village is a rich mix of building styles, watercourses, tracks, road patterns, open spaces and vegetation. Its topography is one of its most distinctive features, as it enables important views through, into, and out of the historic centre of the settlement.

The Village of Sherborne St John is lucky enough to have a great Pavilion and recreation ground available to all on the outskirts of the Village on Vyne Road. In the past year the Parish Council has embarked on an extensive renovation project - redecoration, new storage facilities and re-fenced and resurfaced tennis courts - to enhance and upgrade the facilities.

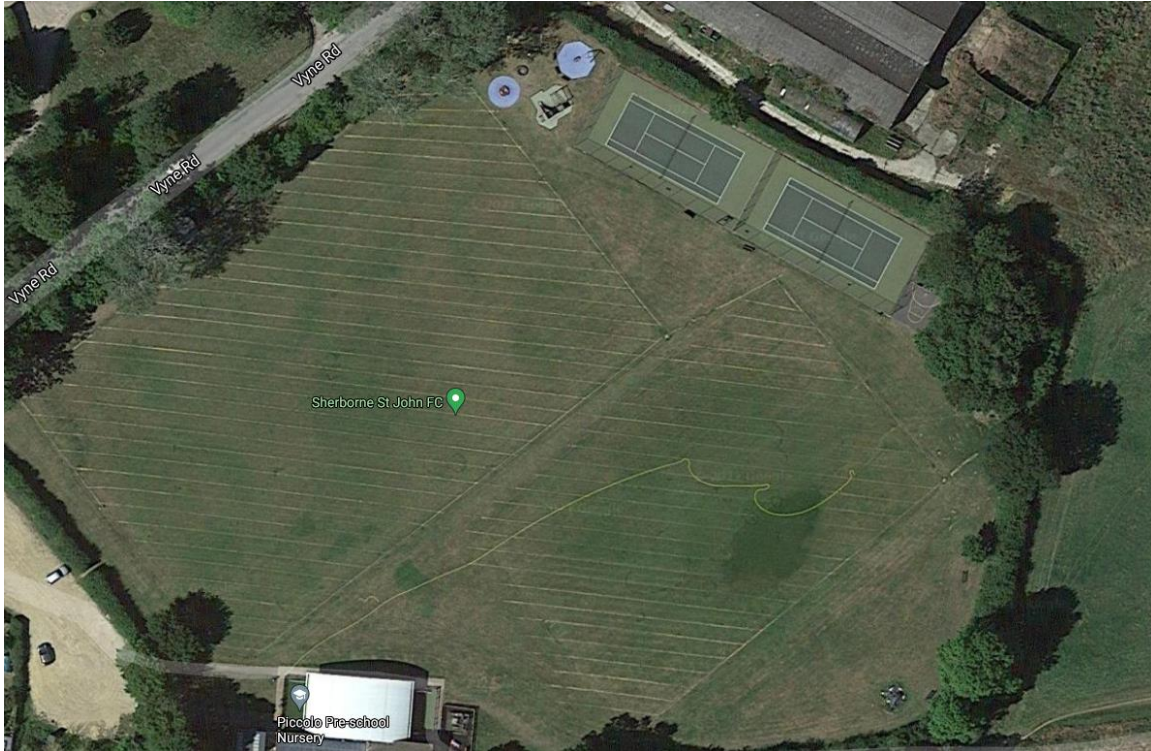
The parish council now look to improve the existing children's play facilities within the recreation ground and are issuing this Request for Proposal [RFP] to seek an experienced partner from within the Play Area design industry with which to deliver playground equipment for the village's children.

The parish council have identified two specific areas of the recreation ground that may be suitable for redevelopment. Currently there is budget identified to carry out this work, but the council wish to avail themselves of all available options prior to deciding on the final design. In addition to parish council funding, the project will look to seek funding from external sources to assist in project costs and will look to the selected partner for advice and guidance on suitable sources of funding.

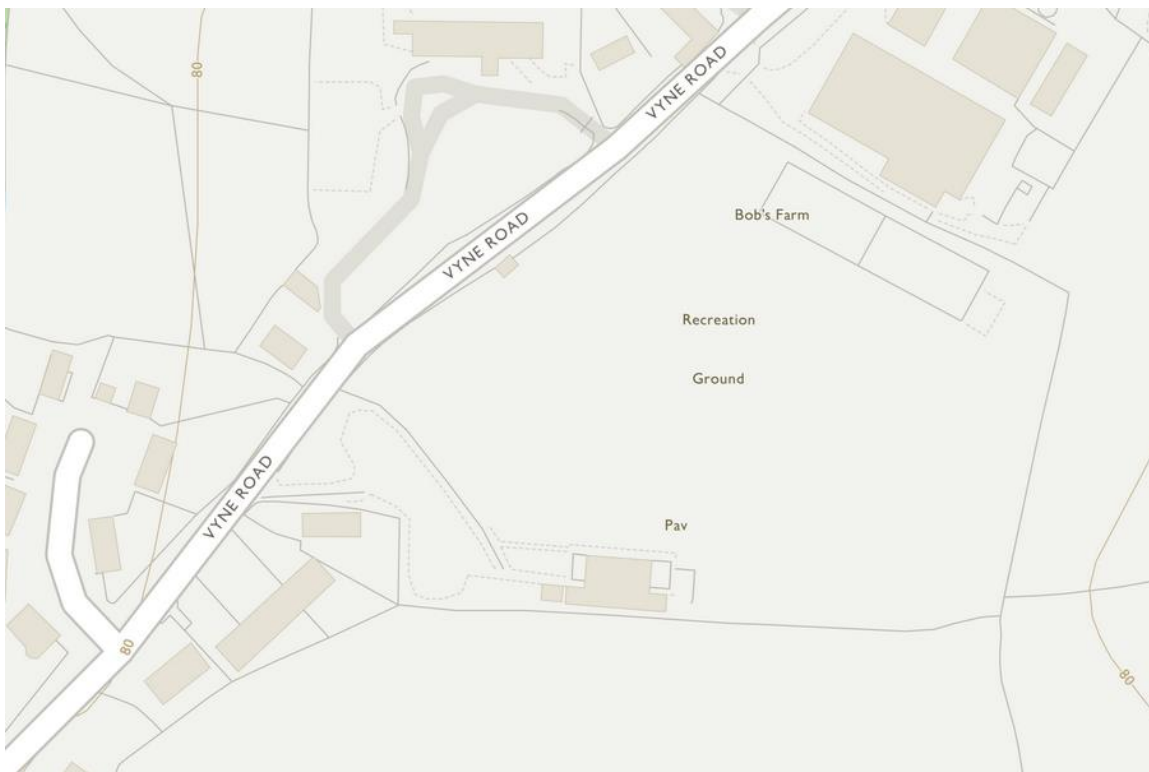


Recreation Ground

The Chute Recreation ground is at 11-15 Vyne Rd, Sherborne St John, Basingstoke RG24 9HX. The following image provides a satellite topology view of the recreation ground.



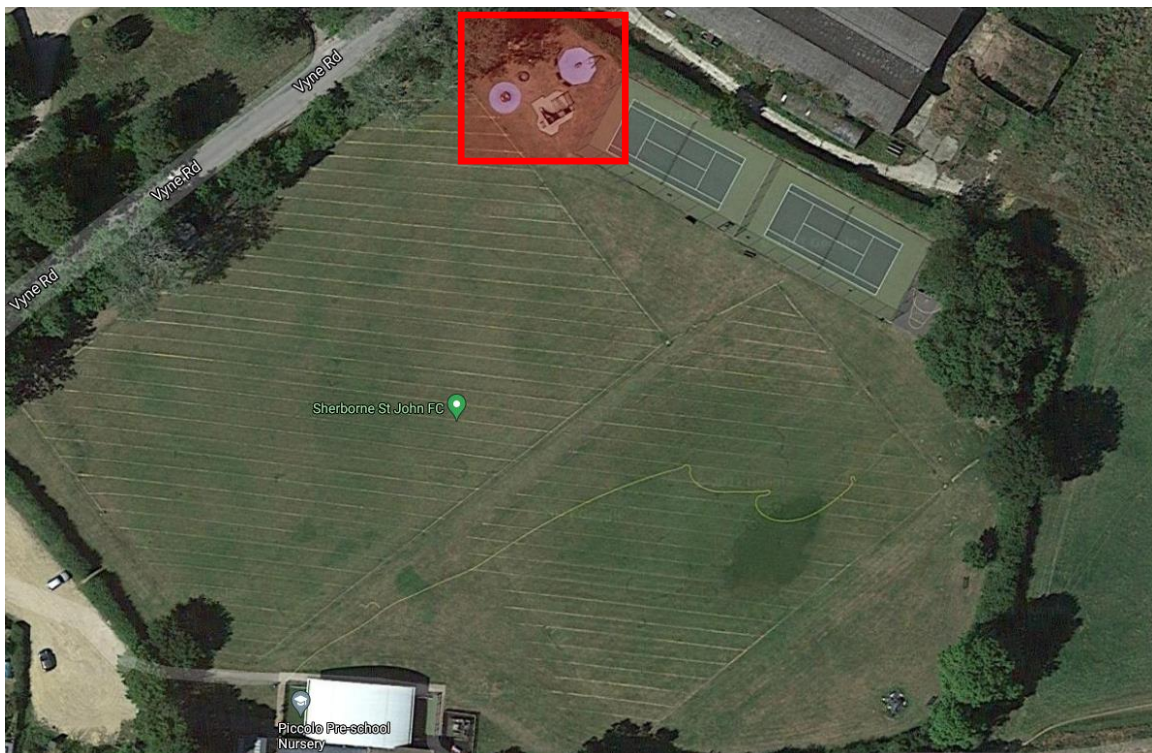
The OS grid reference is SU 62746 55625 and is represented in the image below.



Option 1

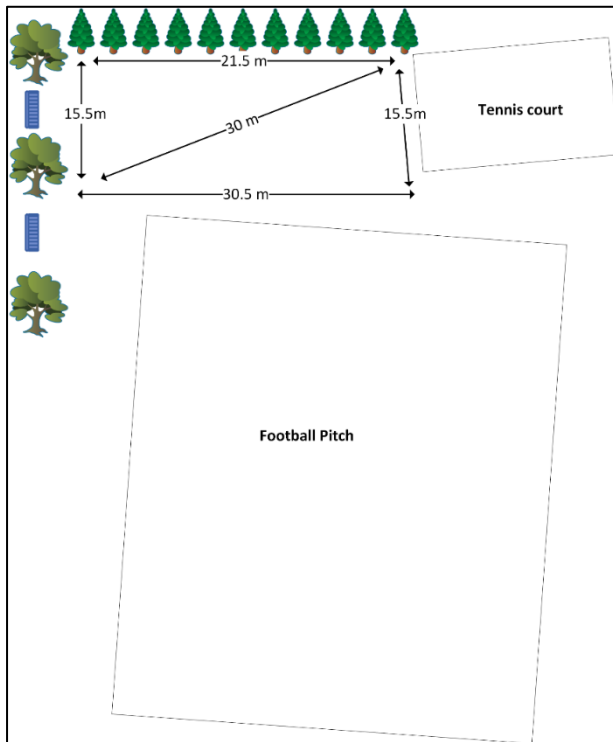
Option one proposes to utilise the existing play area. The budget falls within a £15 to £30 thousand funding window and responders are welcome to submit more than one proposal that falls within the high and low watermark of the funding window. The target demographic is < 10 years old. We welcome responses that reuse existing equipment to save cost if that response includes a service / refresh of the existing equipment.

The existing play area is highlighted in red in the image below.



The following images represent the existing equipment and a rough estimate of the useable area.





Sizes are approximate and rounded down



Option 2

Option two proposes to utilise the unused area to the East of the Recreation Ground. The budget falls within a £30 to £60 thousand funding window and responders are welcome to submit more than one proposal that falls within the high and low watermark of the funding window. The target demographic is 14 > 8 years old, and the parish council would encourage proposals that include all weather multi use games areas. We welcome responses that stage delivery of the proposed design to fit within different parish council funding windows if the initial delivery is usable and the site always remains safe.

The proposed area is highlighted in red in the image below.



This area is estimated as 80m length by 30m width at the widest point. These measurements should be used as an approximate value only and we welcome responders to conduct their own site survey.



RFP Process

The council requests submissions for the RFP to be submitted no later than four (4) weeks from date of receipt. The council request that all submissions are costed and excludes any ongoing maintenance / support costs as the final price of the submission. Responders are actively encouraged to provide an indication of annual maintenance costs along with their submissions; however, this must not be included in the final costing. Responders are asked to include an annotated diagram showing the proposed design including reuse of any equipment where appropriate

The council will score the submission on the following categories:

Value for money

Submission will demonstrate best use of council funds, utilising existing equipment where possible or demonstrating where replacement of old for new provides superior cost saving when compared to refurbishment and long-term upkeep. For option two only, value for money will be judged upon cost of the submission against the perceived functionality of the design

Use of existing space

Submission will demonstrate clear design principles maximising the limited space available whilst offering a variety of play equipment

Maintainability

Submission will be scored on maintainability of the proposed design. Submissions must include a recommended maintenance schedule with a rough order of magnitude of maintenance costs included as part of the submission

Functionality

Submission will be scored upon meeting target demographic of each project along with innovative approaches to delivering a safe and enjoyable play area.